

6

5

4

3

2


1

**MATERIAL AND FINISH:**


Insulator: Polycarbonate, UL-94V-0 rated

Contacts: Brass, Tin Plated

**ELECTRICAL SPECIFICATIONS:**

Current rating: 10 A 

Current rating: 15 A 

Voltage rating: 250 VAC 

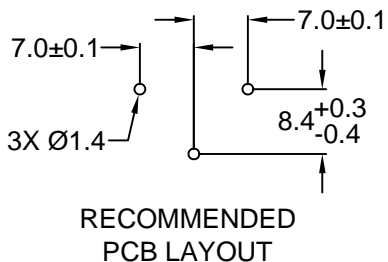
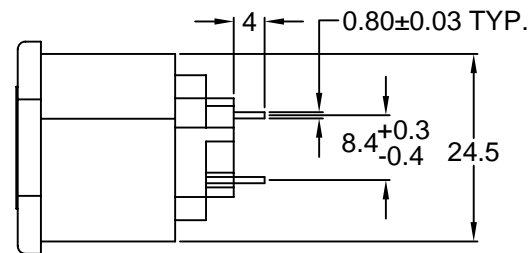
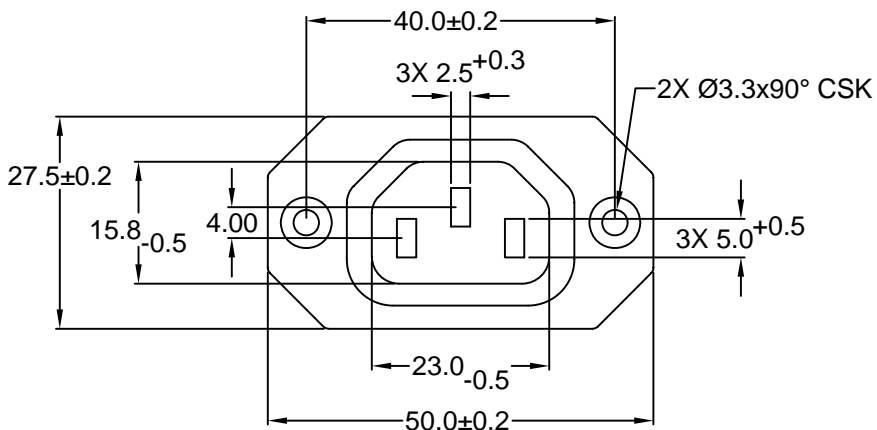
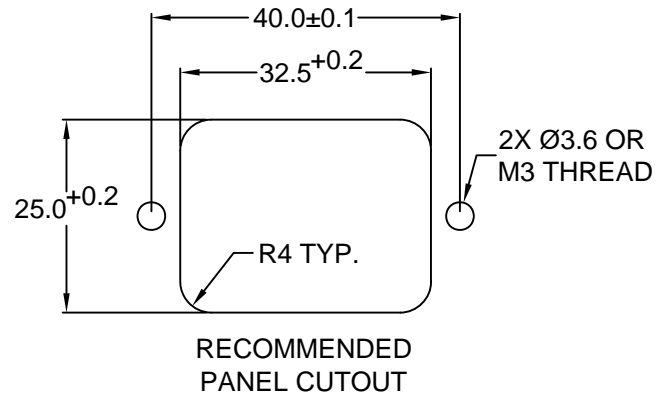
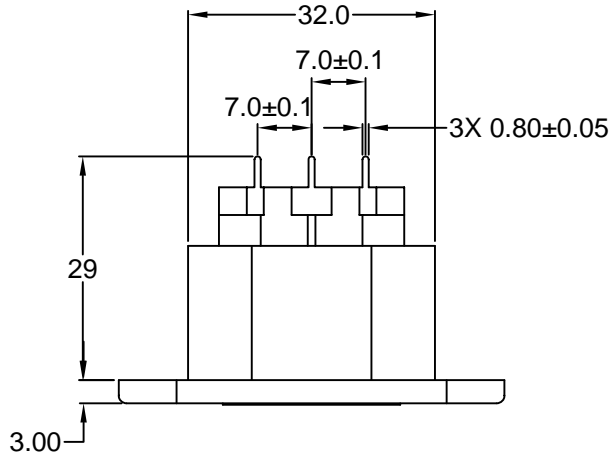
Insulation resistance: 100 Mohm min. at 500 VDC

Dielectric withstanding voltage: 2000 VAC for one minute

**ORDERING CODE:**

43R09-1    3 2  
                  1

- 1) COLOR
- 1 = BLACK
- 2 = GRAY



RoHS COMPLIANT

TOLERANCE UNLESS OTHERWISE SPECIFIED		
X	±	1
X.X	±	0.4
X.XX	±	0.20
DRAWN BY	GQ	DATE: 10/09/01
CHECK BY	TD	DATE: 10/11/01
APPR BY	PB	DATE: 10/11/01

**Power Dynamics, Inc.**  
Phone: 973 560-0019 Whippany, New Jersey Fax: 973 560-0076

PART: 10A/15A IEC 60320 APPL. OUTLET; STRAIGHT PC TERMINALS; SIDE FLANGE, PANEL MOUNT

43R09-1X32 SHEET 1 of 1

SCALE: NTS ALL DIMENSIONS FOR REFERENCE ONLY DIMENSIONS ARE IN MILLIMETERS REV:

D

C

B

A

REVISIONS	CHNG	CHK	APPR
REV	DATE	CHANGE	

6

5

4

3

2

1